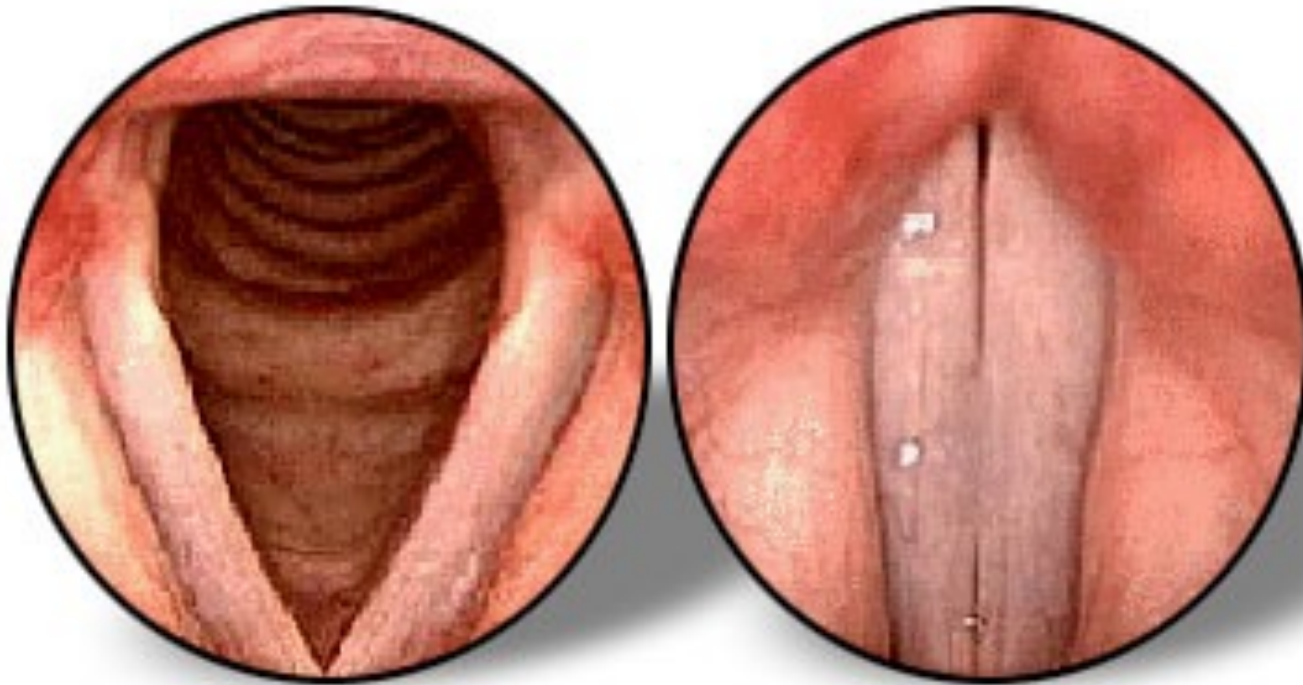
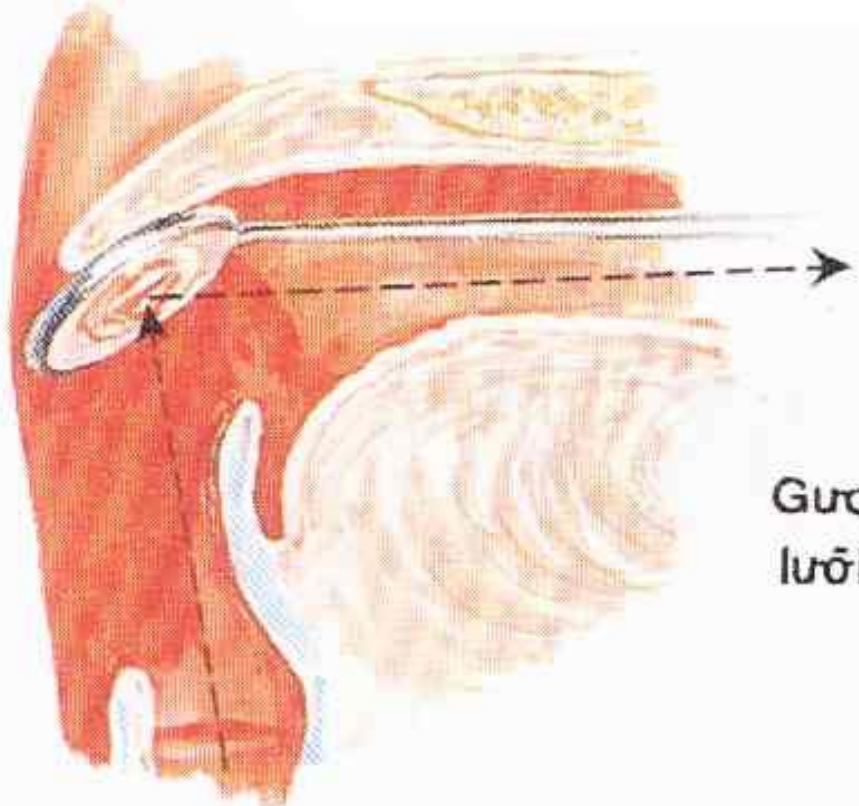


ĐẠI CƯƠNG

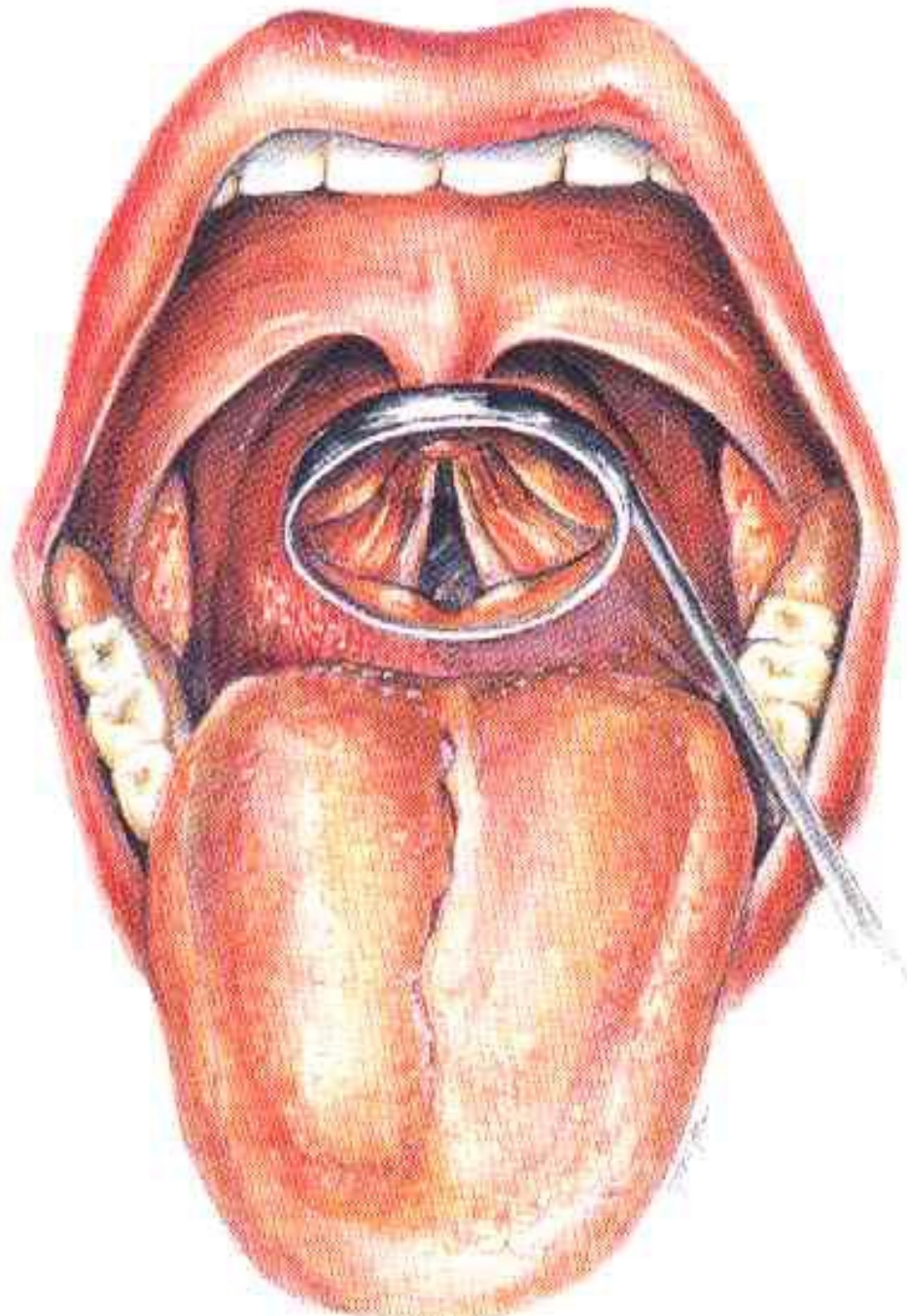
Bệnh lý thanh quản

PGS TS LÂM HUYỀN TRẦN



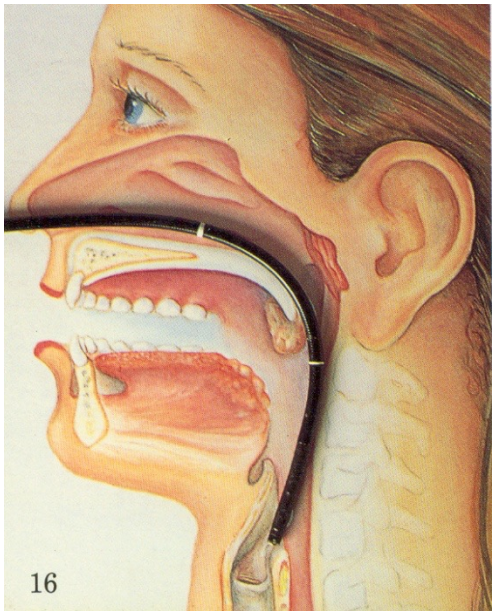


Guồng
lưỡi g

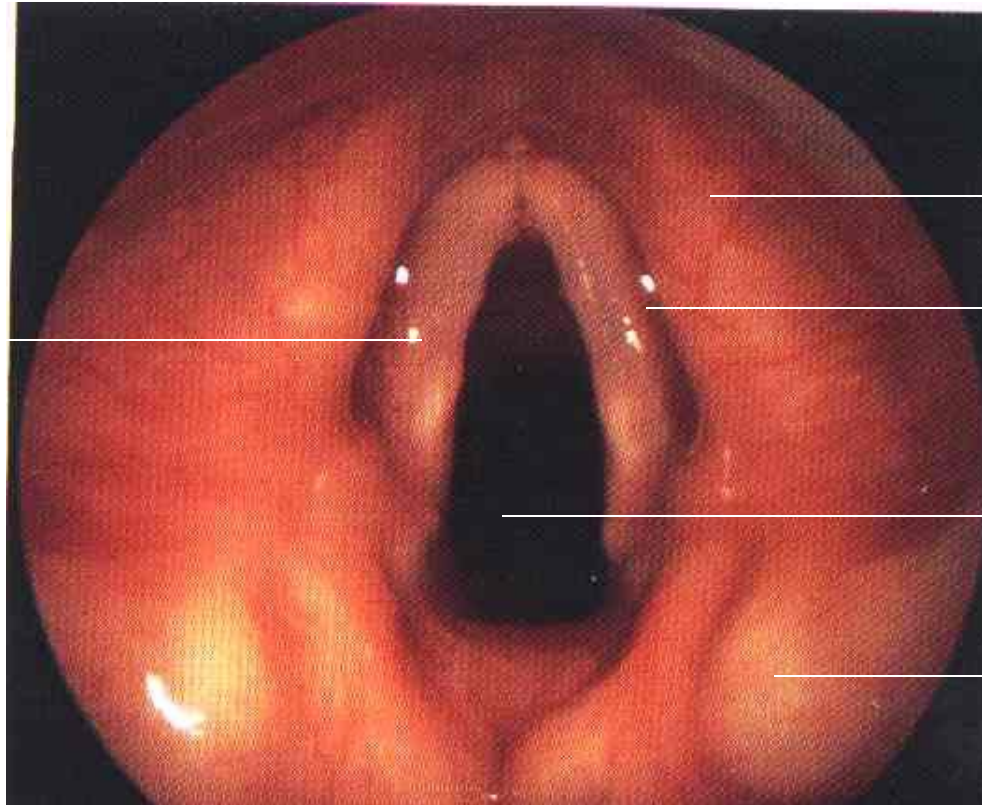


Nội soi thanh quản

- ống soi mềm
- ống soi cứng



Dây thanh



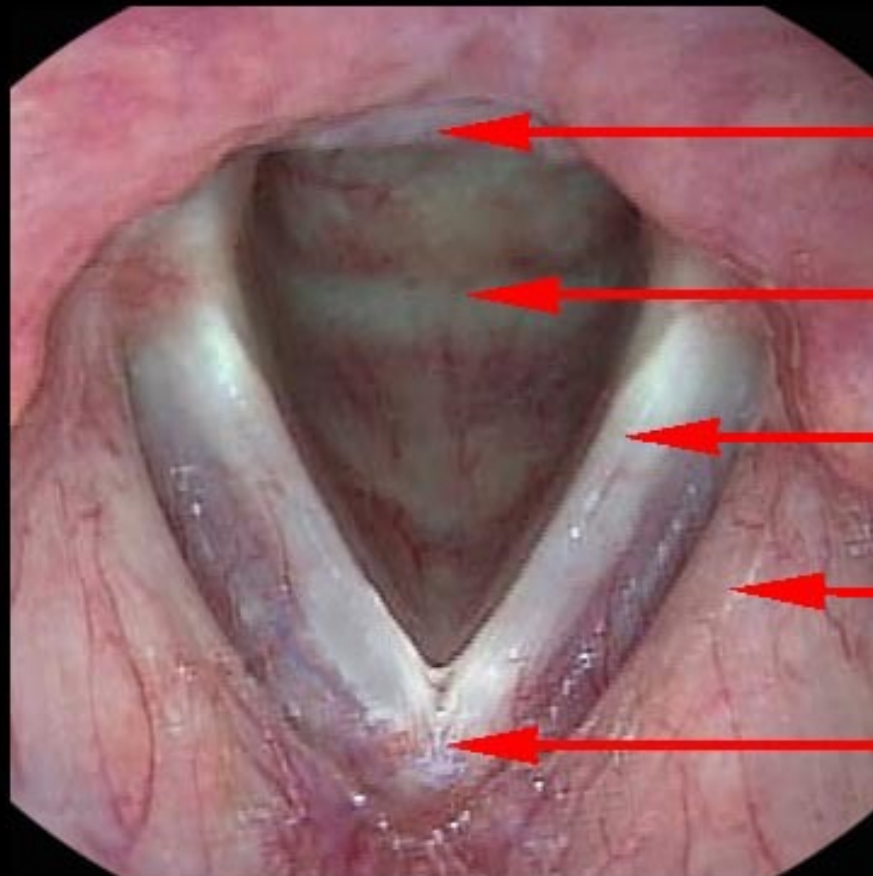
Băng thanh
thất

Thanh thất
Morgagni

Thanh môn

Sụn
phễu

Normal Larynx



posterior commissure

proximal trachea

true vocal fold

false vocal fold

anterior commissure

BỆNH LÝ THANH QUẢN

- Bất thường bẩm sinh
- Viêm thanh quản
- Khối u lành tính ở thanh quản
- U ác tính ở thanh quản

MỀM SỤN THANH QUẢN



KHE HỞ THANH QUẢN



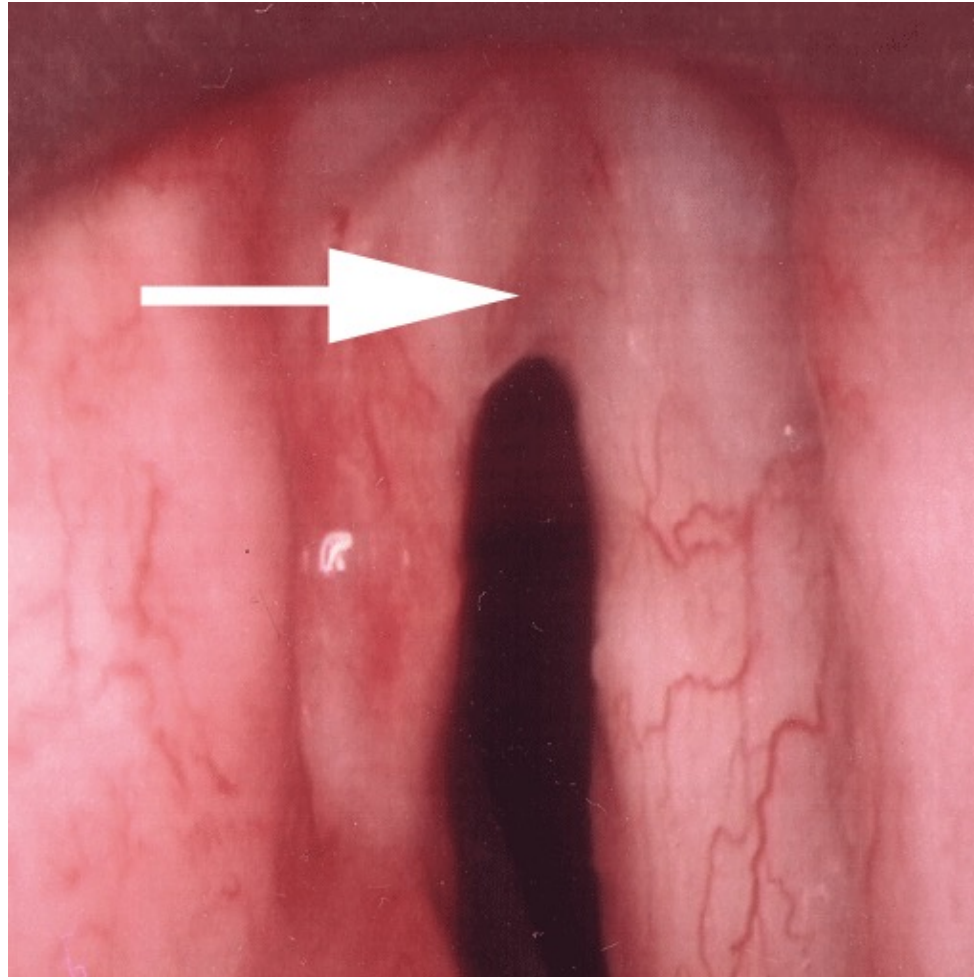
Hẹp hạ thanh môn



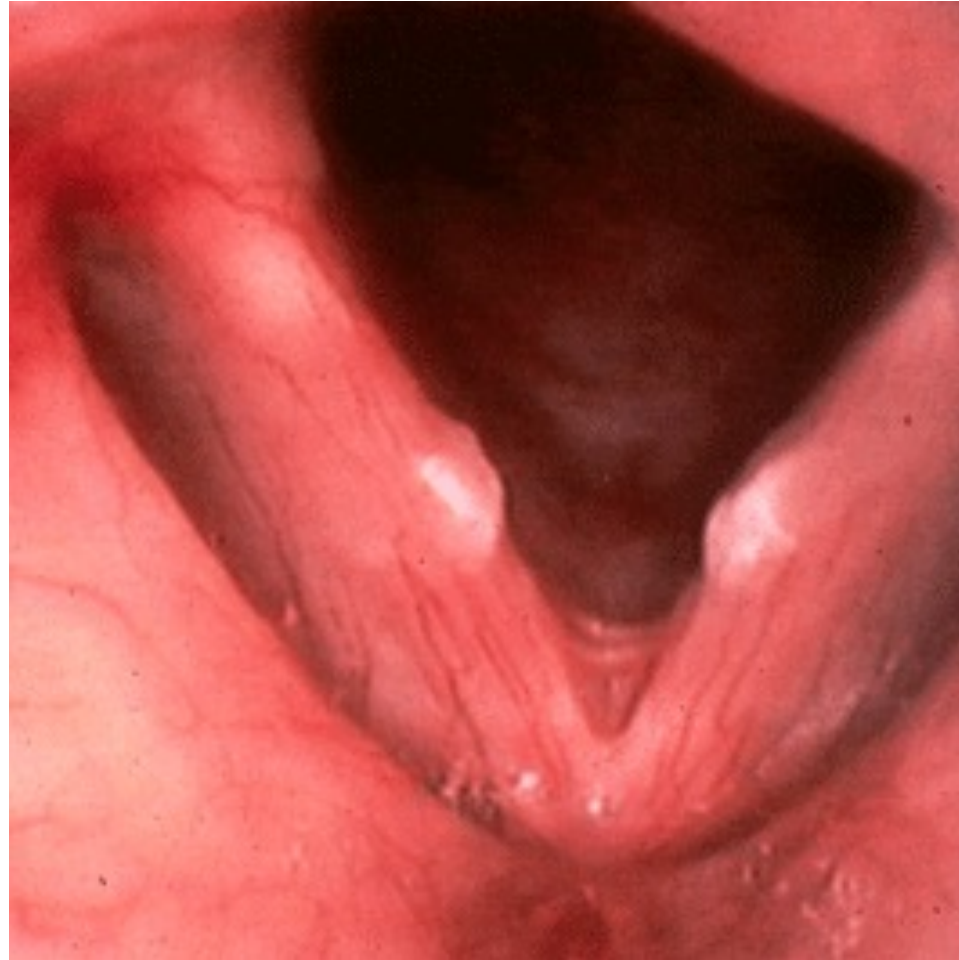
Liệt dây thanh 2 bên



Màng chân vịt mép trước



Hạt dây thanh 2 bên

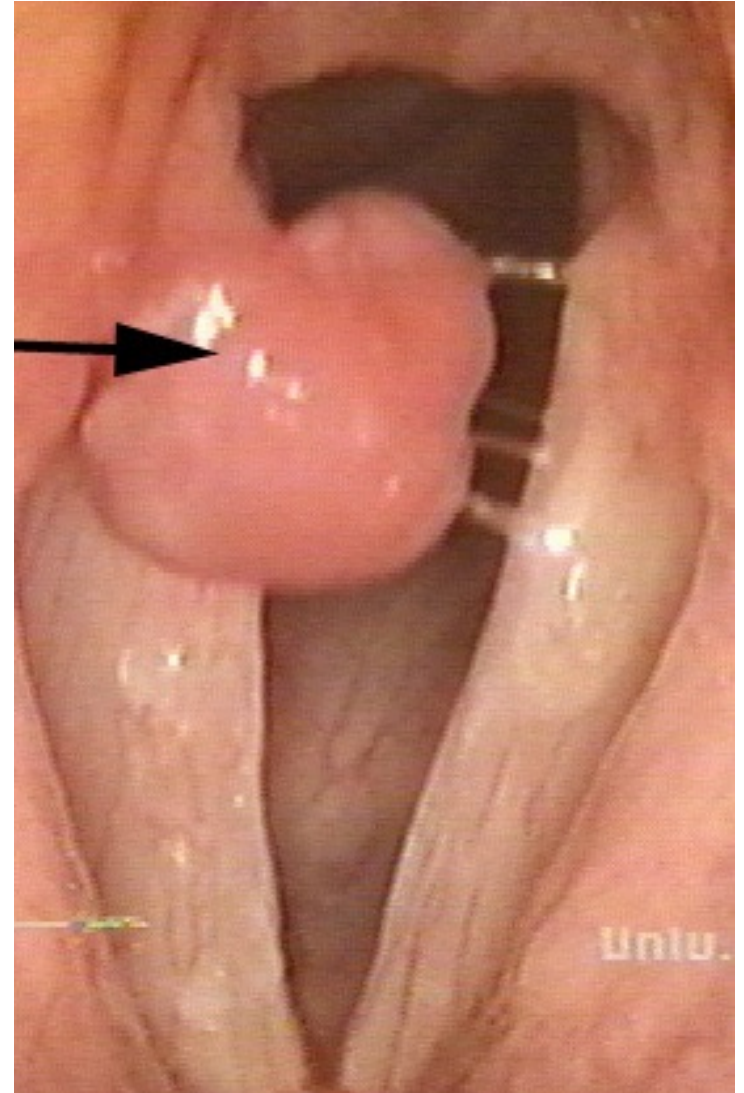
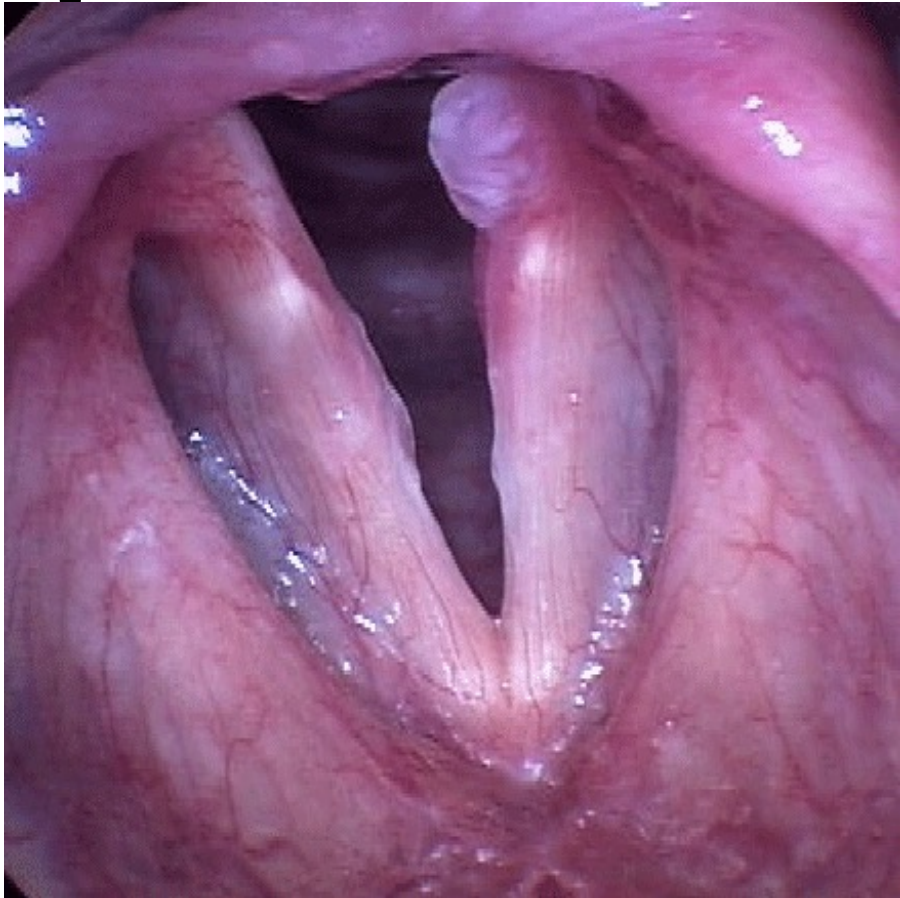


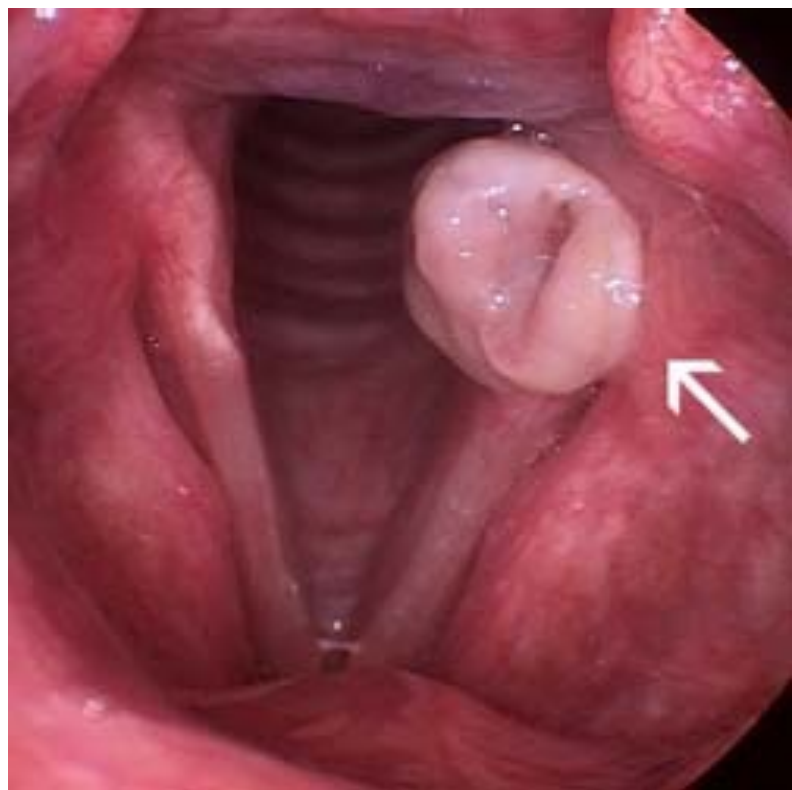
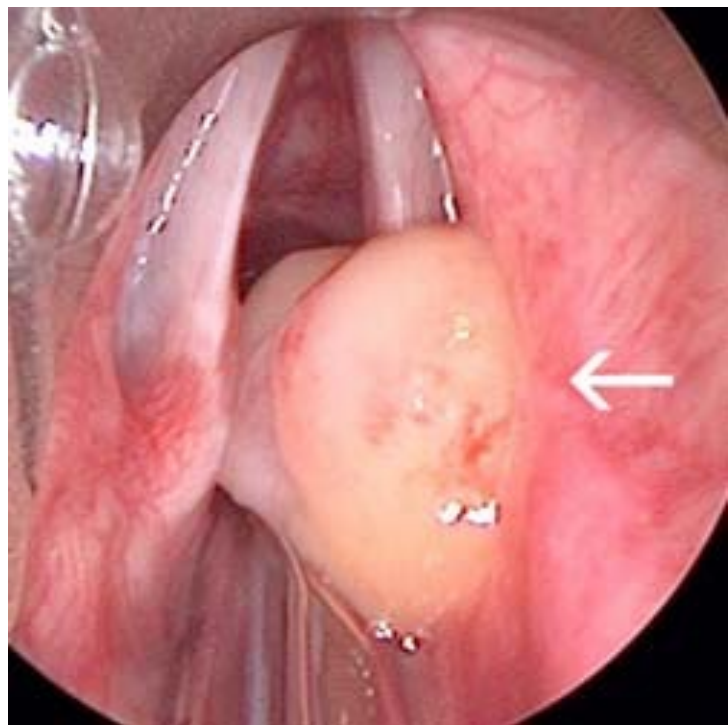
Polyp dây thanh P

- .



U hạt máu thanh





Giả nang dây thanh P

- .



Nang trong dây thanh

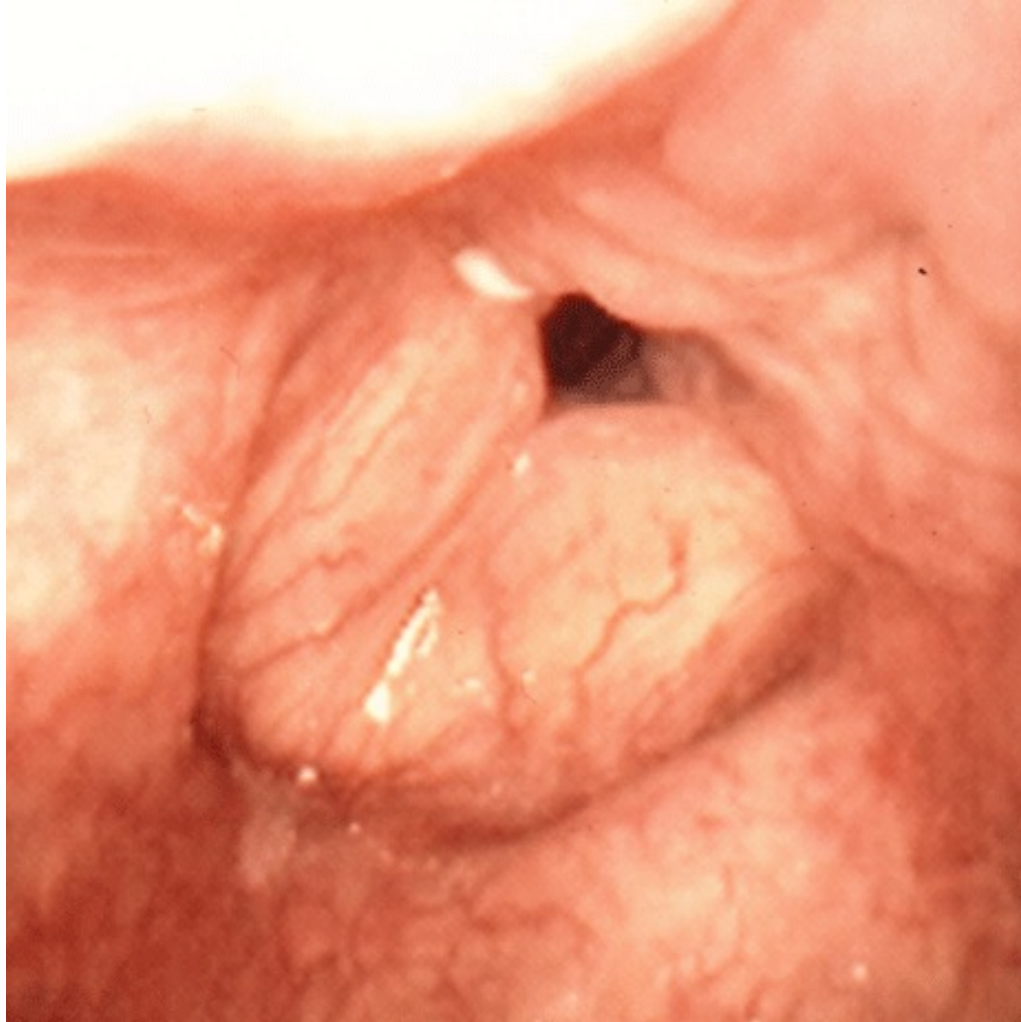


Nang dưới niêm mạc dây thanh P

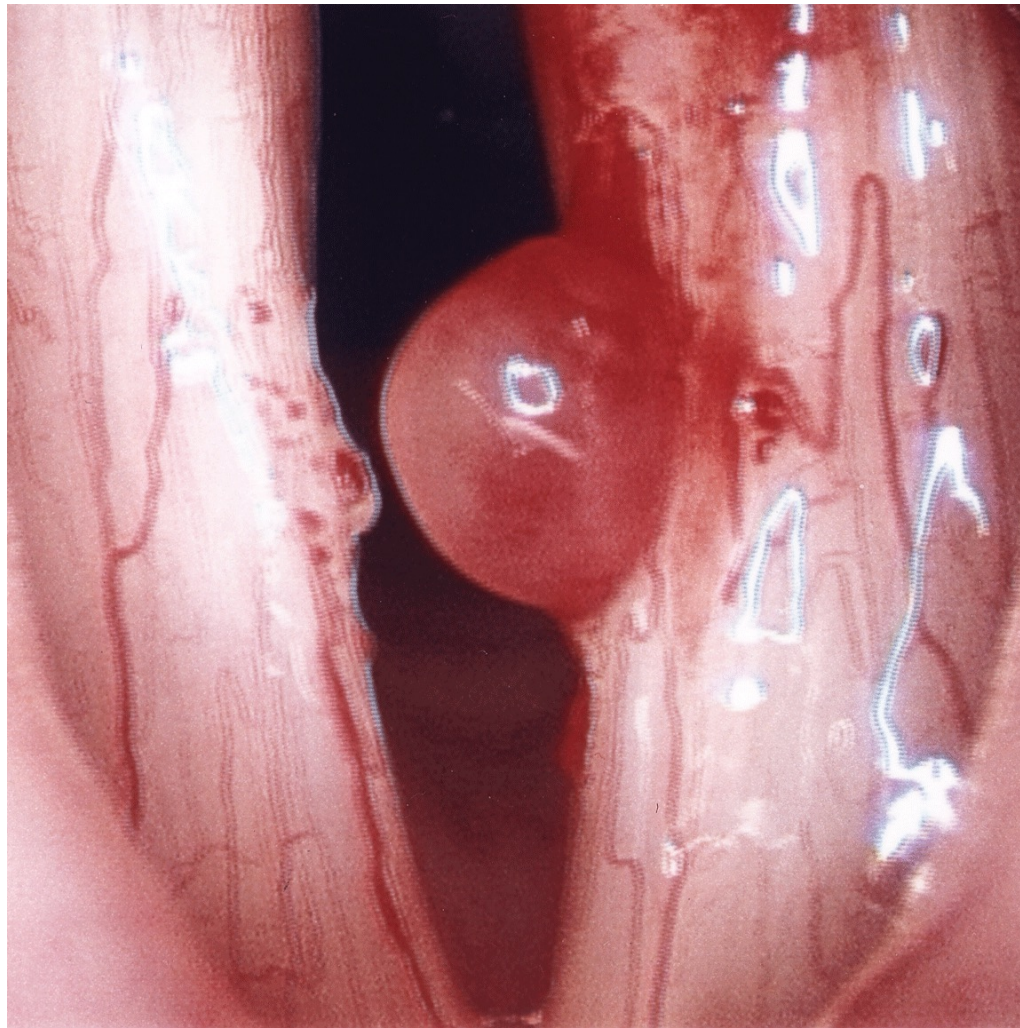


Thoái hoá dạng polyp 2 dây thanh: phù Reinke

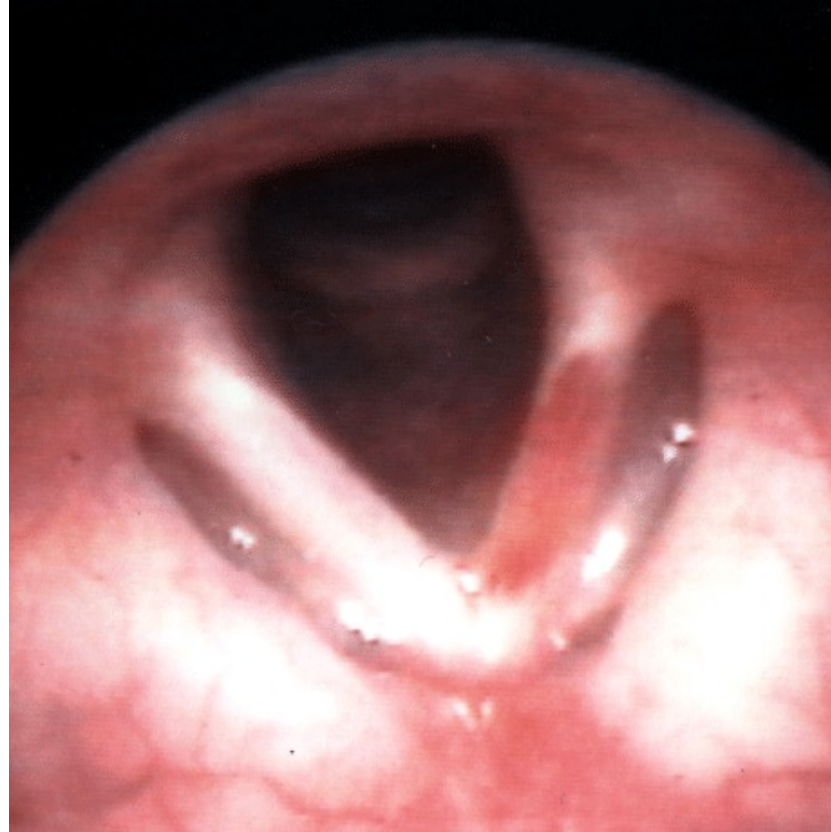
- .



Polyp mạch máu dây thanh T



Tụ máu dây thanh T

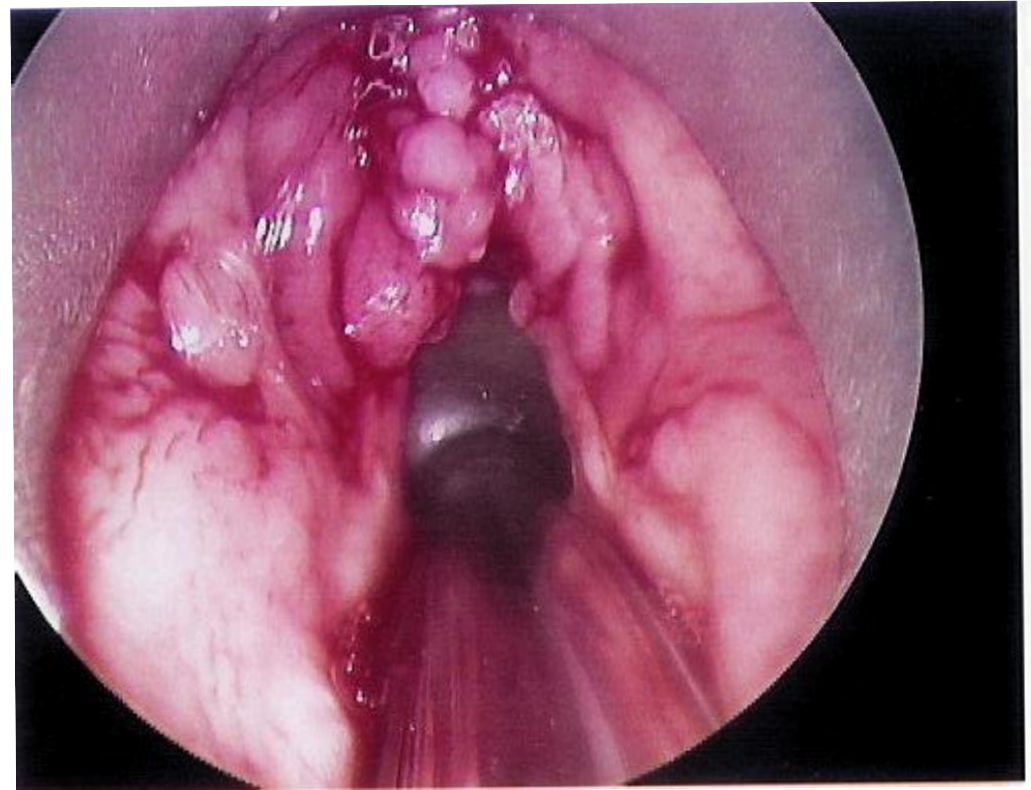
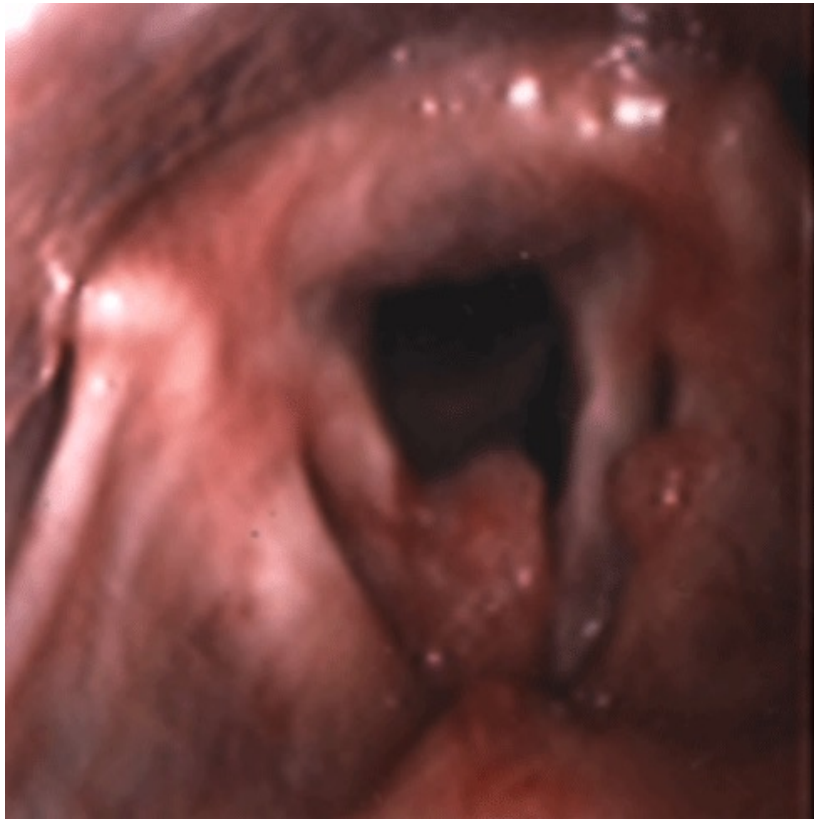


Viêm thanh thiệt cấp

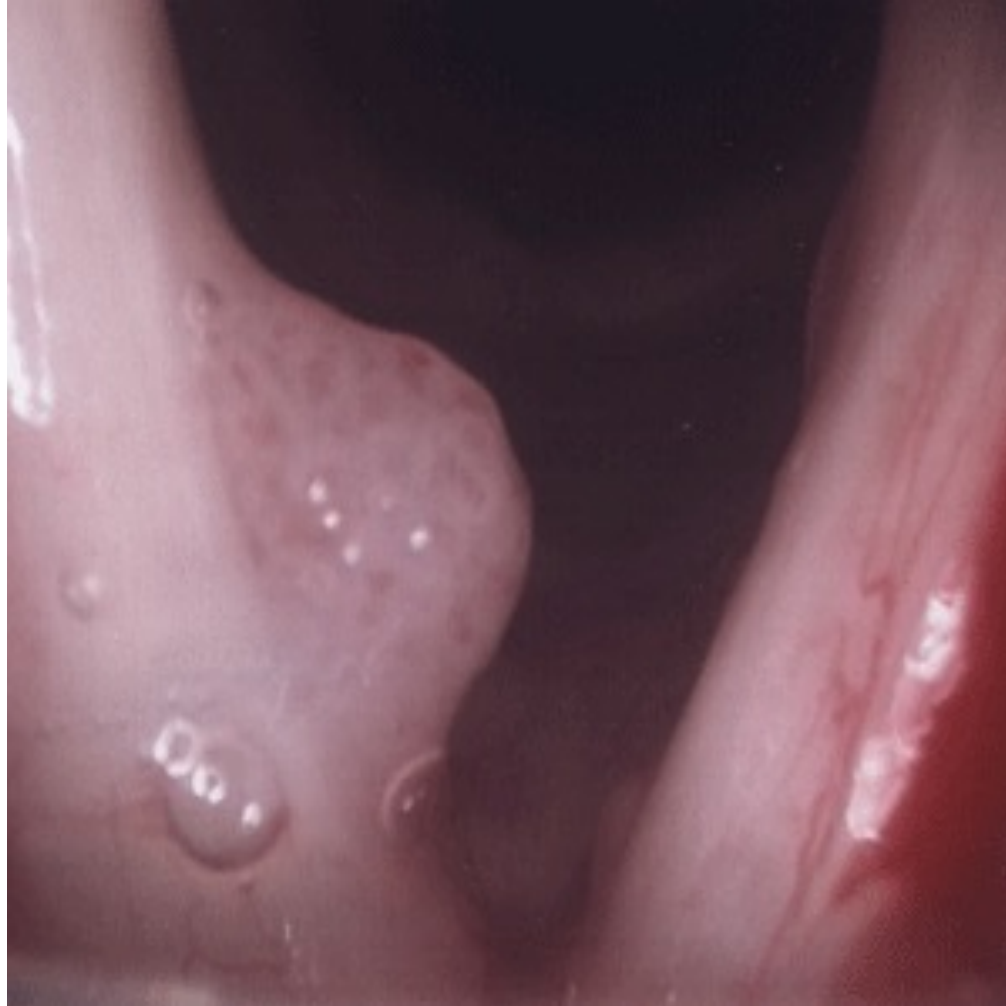


U nhú thanh quản

- .

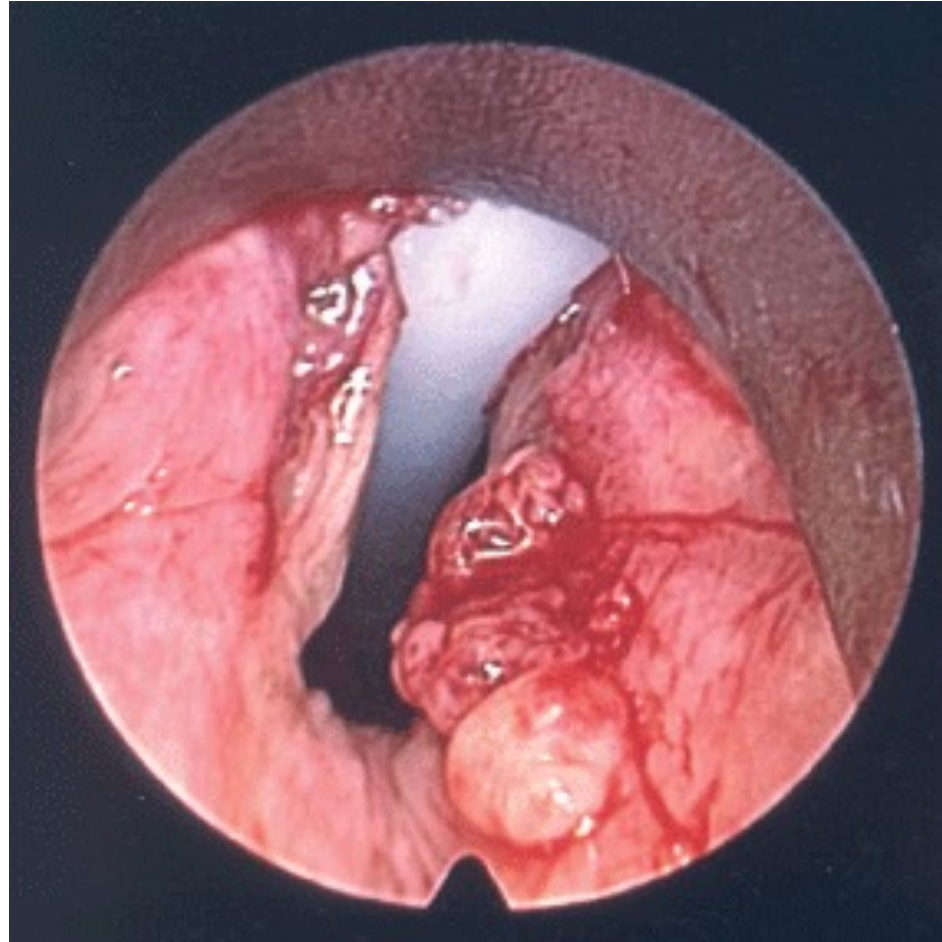


U nhú thanh quản

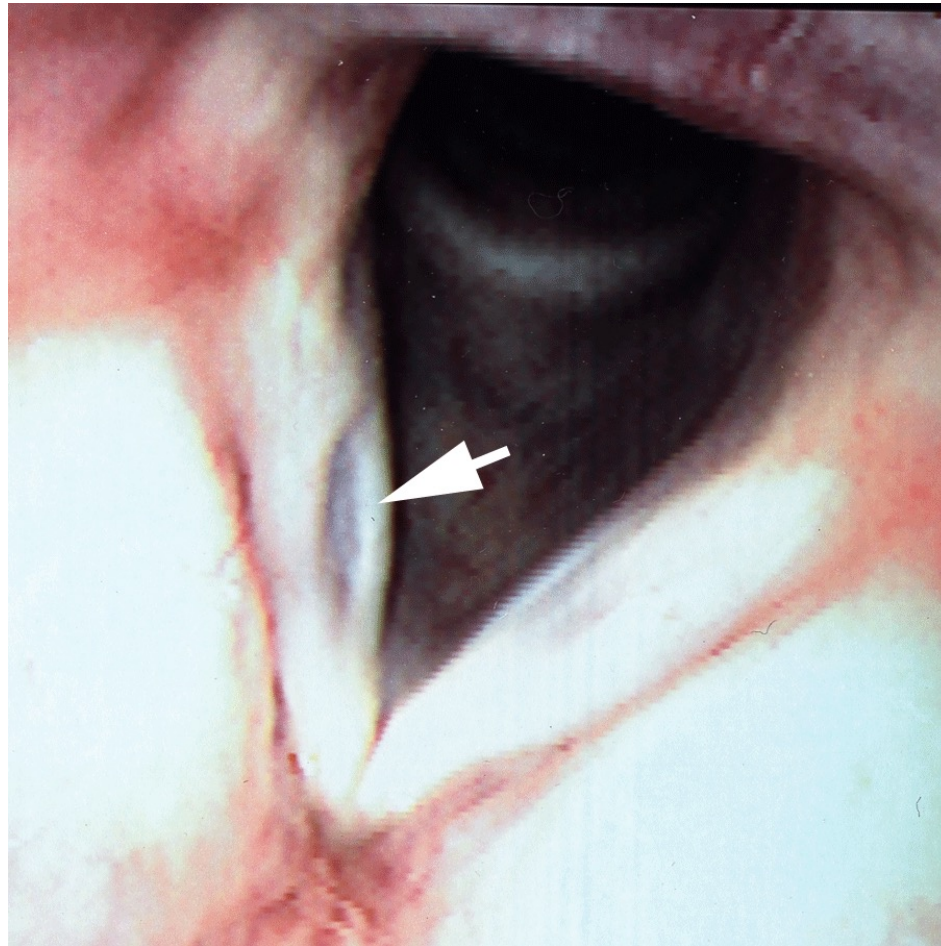


Sarcoidose thanh quản

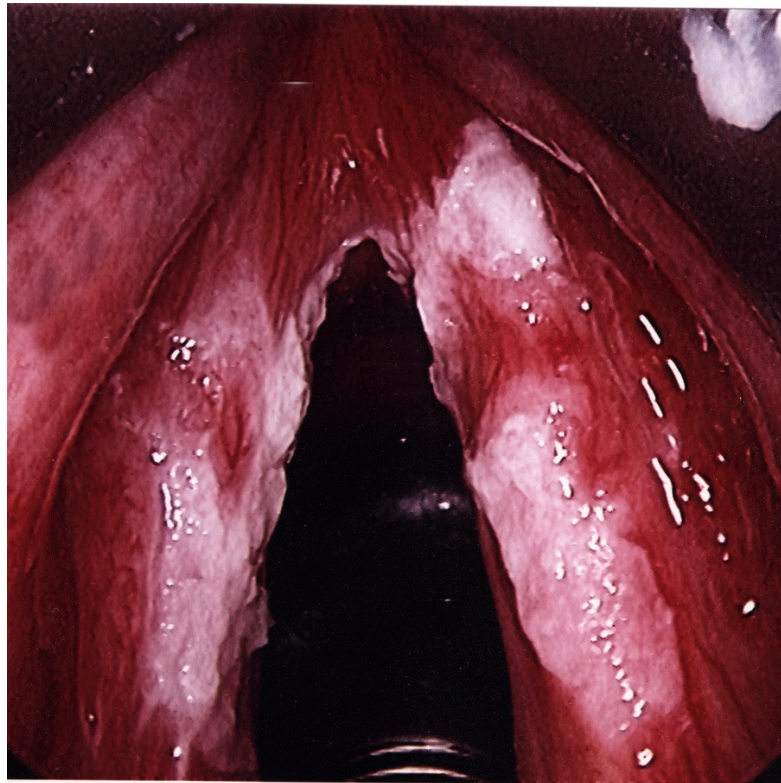
- .



Rãnh thanh âm P



Bạch sản dây thanh

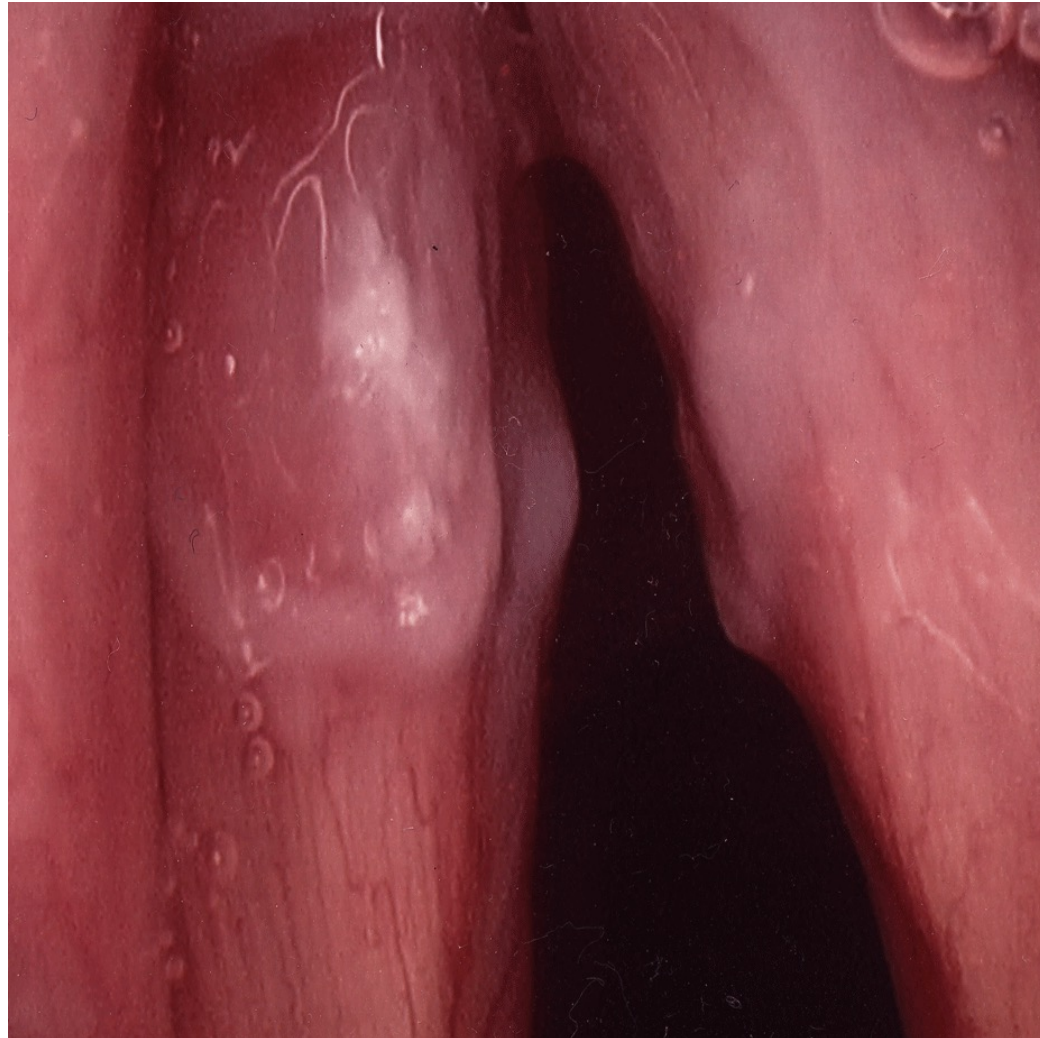


Nang thanh quản



Loét chỗ tiếp xúc 2 dây thanh

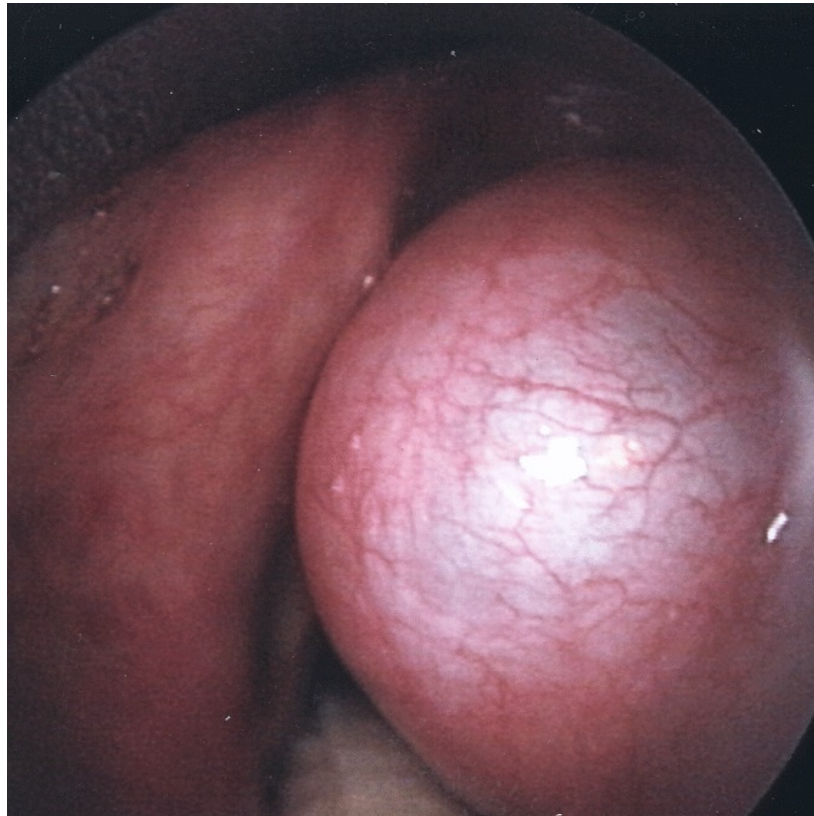
- .



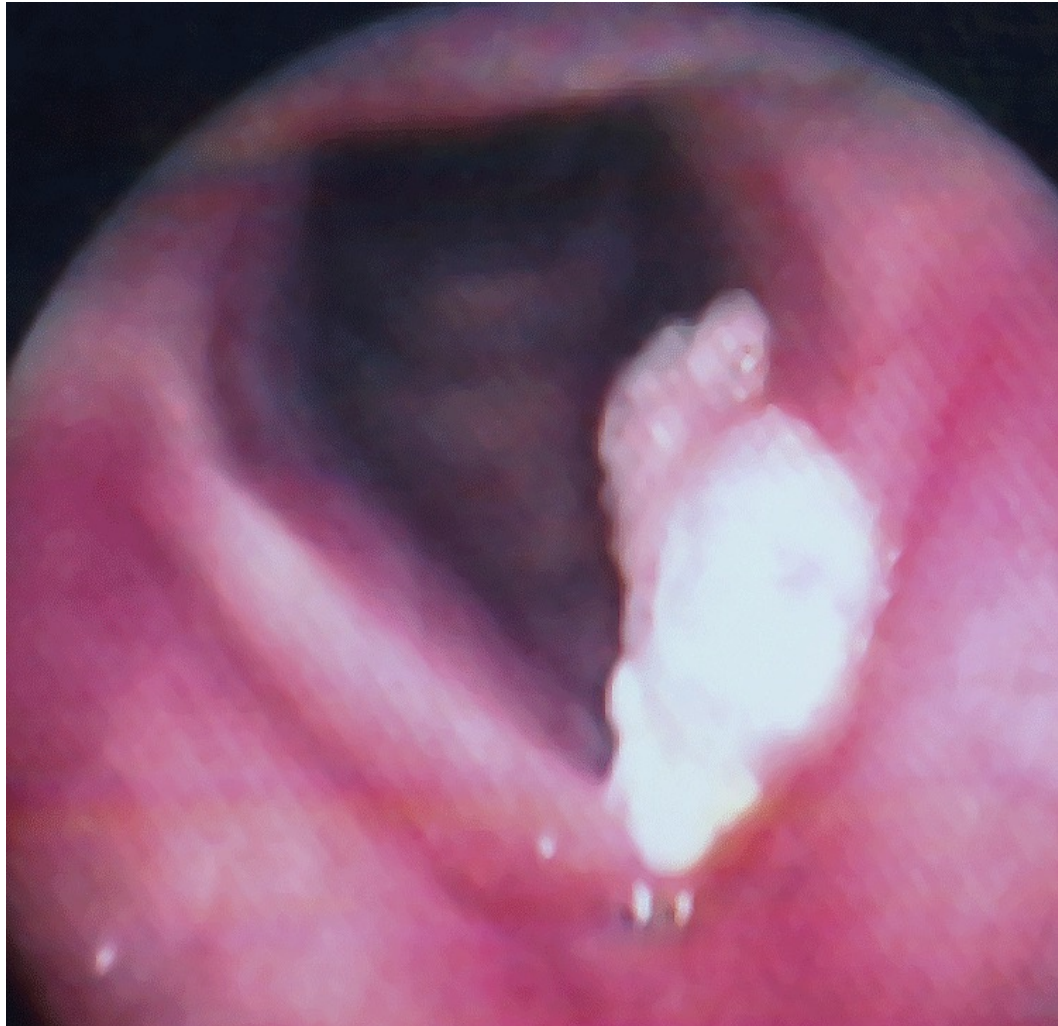
Nấm thanh quản



Thoát vị thanh quản



Bạch sản và ung thư dây thanh



Liệt dây thanh T

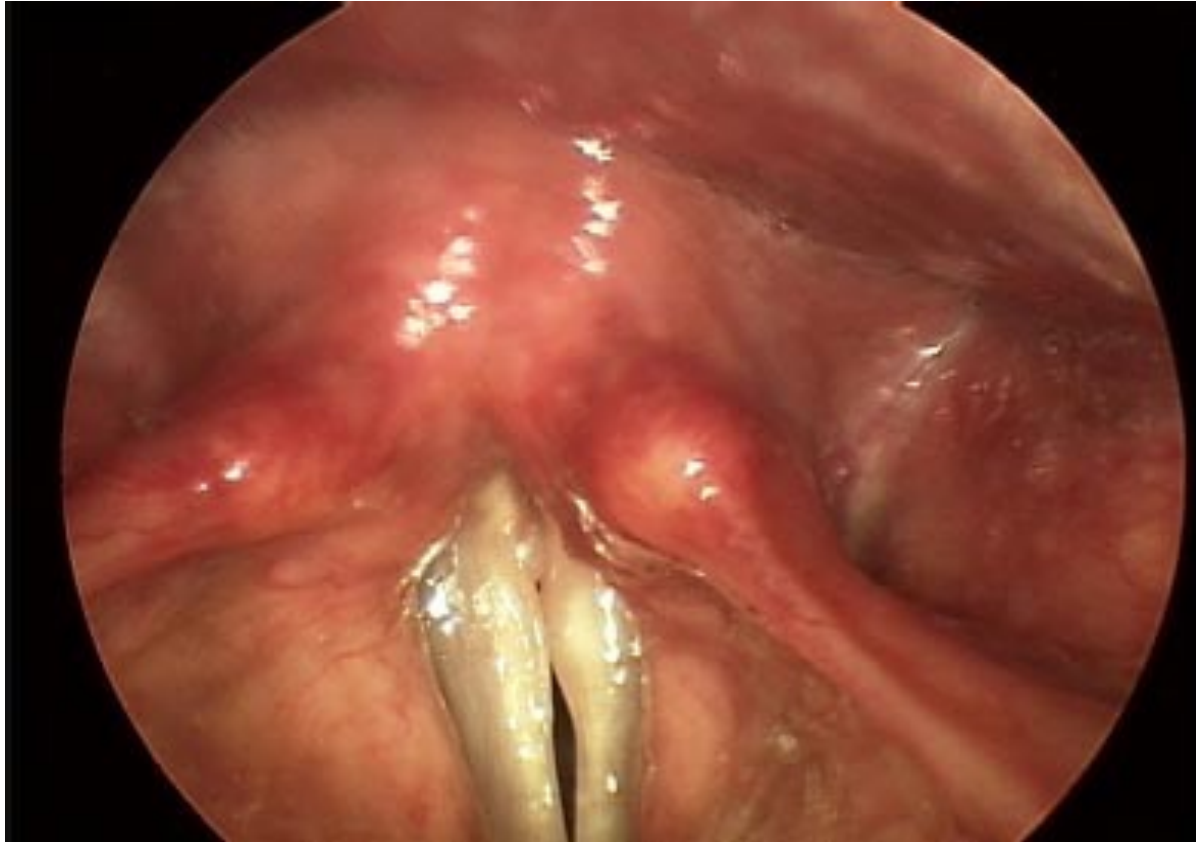


Recurrent Laryngeal N.
Paralysis

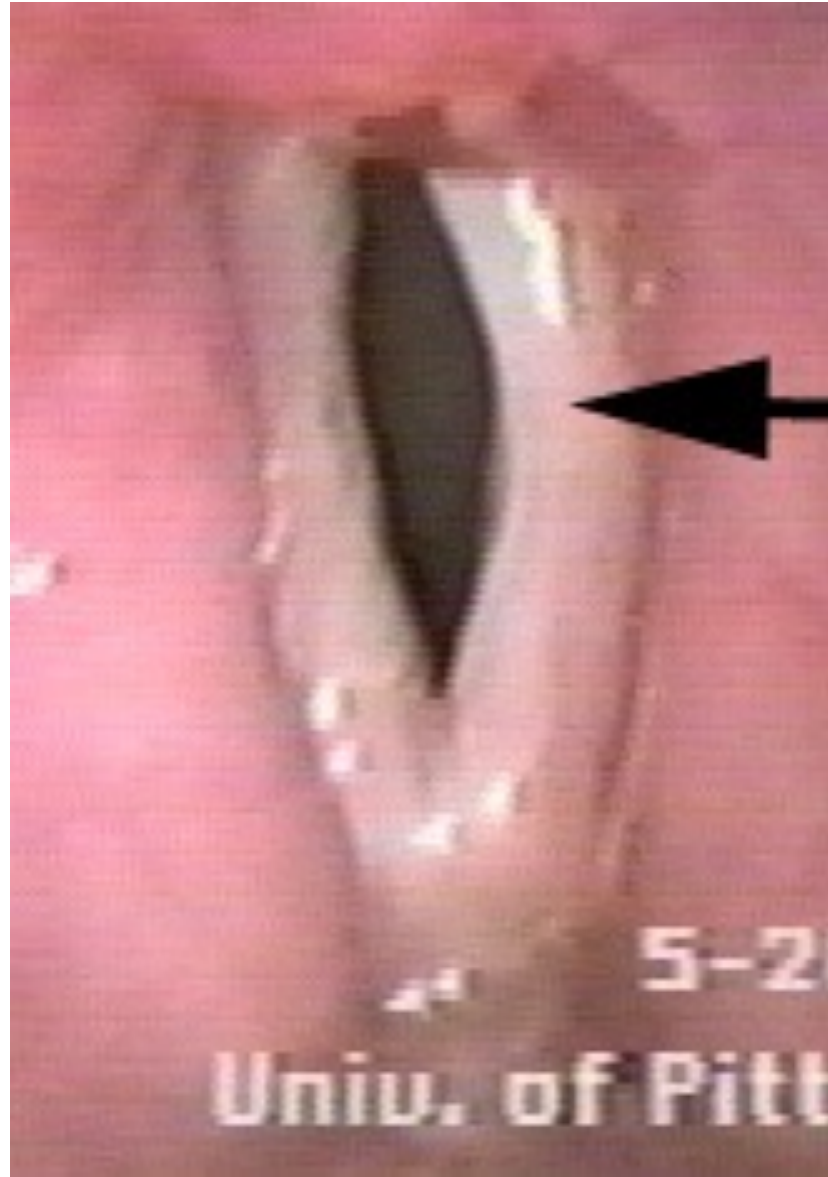


Unilateral left vocal fold
paralysis (Superior N.
Paralysis)

Teo dây thanh 2 bên



liệt dây hồi qui 1 bên



Liệt dây thanh 2 bên



Hẹp hạ thanh môn

